



#### Getting to the Museum

**Bus:** From Platform 5 at the Toyama Station south entrance, board a Toyama Chitetsu bus bound for Tatsudodanchi/Inotani/Toyama Kokusai Daigaku/Sasazu/Fukuzawa/Kokuritsu Kosen and get off at Nishinakanoguchi.

**Toyama City Tram Line:** Get off at Nishinakano and walk 7 minutes.

**Car:** 3 km from the Toyama Interchange, 6 km from Toyama Airport

## 富山市科学博物館 TOYAMA SCIENCE MUSEUM

1-8-31 Nishinakano-machi, Toyama City 939-8084, in Jōnan Park  
TEL: 076-491-2123 FAX: 076-421-5950  
<https://www.tsm.toyama.toyama.jp/>



※ Admission includes one complimentary planetarium show.  
No deduction is made for visitors who do not attend the show.  
※ Additional fees apply for special exhibitions (adults only).  
※ Information on discounts is available at the ticket sales office.  
※ You are allowed to re-enter on the day of issue only.

	Free	High-school and under	
		Group (minimum 20)	Individual
Adult	¥150	¥420	¥530
One-year	¥1,500	¥210	¥530
Admission	Each additional planetarium show	¥530	¥530

Hours: 9:00-17:00 (admission ends at 16:30)  
Closed each year from December 28 to January 4 and on special closing days

#### Visiting the Museum

Admission



# Journey to Space

## 3rd Floor

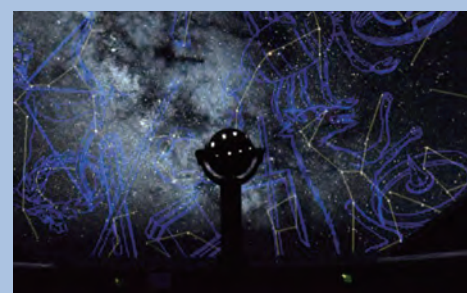
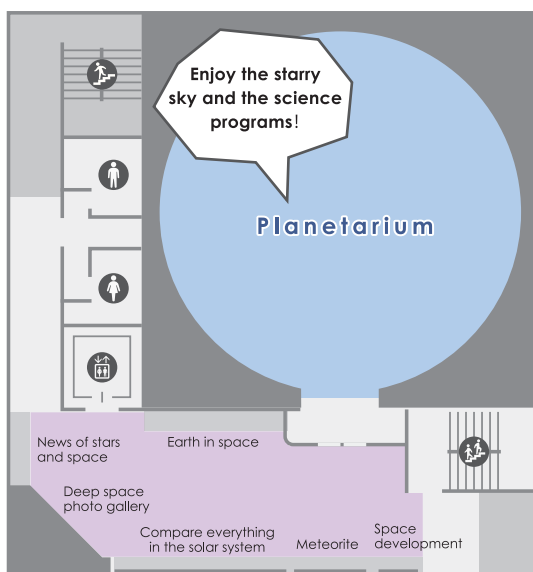
Learn the great wonder of Space and the uniqueness of Planet Earth from the mysterious features of nebulae and star clusters, the characteristics of solar system bodies, and the origin of meteorites.

### Planetarium

Enjoy a trip to space and the starry sky made up of 100 million stars and powerful fulldome video.



The optical planetarium projector



### Guidance for planetarium show.

Content varies with each show. Please check our website for the timetable of shows. (each show lasts about 45 minutes)

Purchase planetarium tickets of your desired time at the ticket office on the first floor

Viewers are requested not to enter or leave the planetarium once the show has started. Exceptions will be made for those who need to leave due to illness or the like.



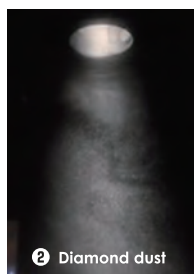
# Toyama: A Journey Through Space

## 2nd Floor

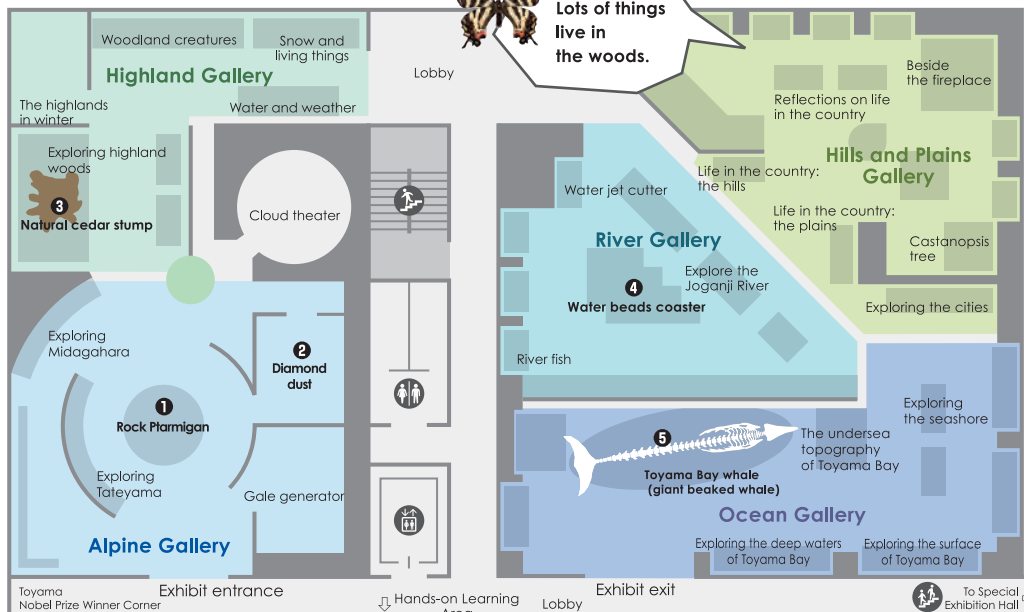
Join us as we travel from the mountains of Tateyama to the deep waters of Toyama Bay, along the way exploring a variety of natural environments and discovering the plants and animals living there and related scientific principles and laws. We will also reflect on the relationship between human beings and the natural world.

### Main Exhibits

- 1 Rock Ptarmigan
- 2 Diamond dust
- 3 Natural cedar stump
- 4 Water beads coaster
- 5 Toyama Bay whale (giant beaked whale)



2 Diamond dust



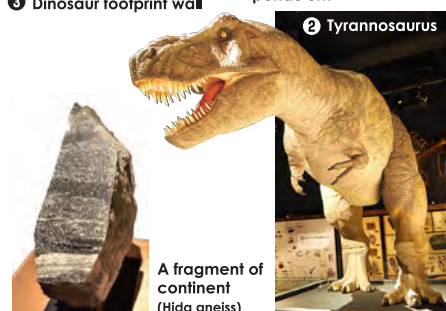
# Toyama: A Journey Through Time

## 1st Floor

What was Toyama like long ago? When and how did the Tateyama Mountains and Kureha Hills come to be? Take a trip through time to explore Toyama's distant past.

### Main Exhibits

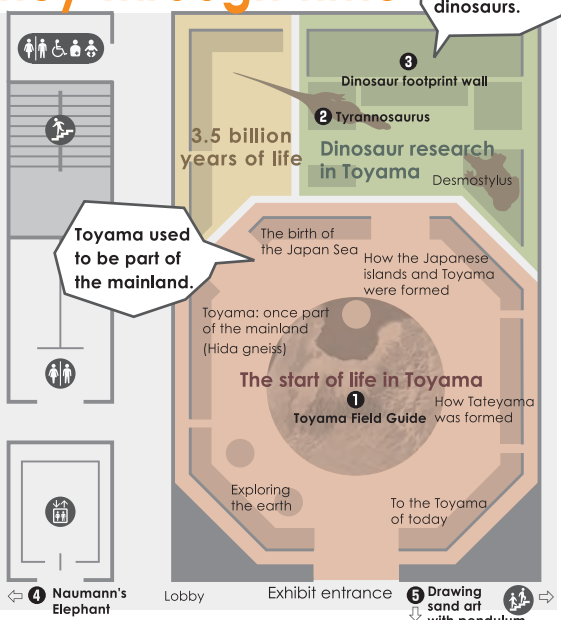
- 1 Toyama Field Guide
- 2 Tyrannosaurus
- 3 Dinosaur footprint wall
- 4 Naumann's elephant
- 5 Drawing sand art with pendulum



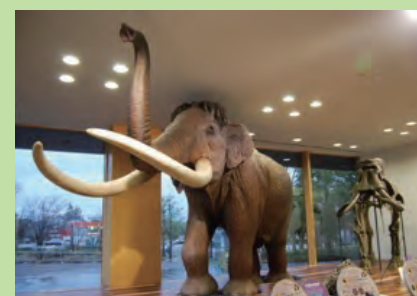
2 Tyrannosaurus



A fragment of continent (Hida gneiss)



### 1F entrance



4 Naumann's elephants that inhabited in ancient Toyama give you a welcome at the entrance.



5 The drawing sand art with pendulum in the library and reference corner.